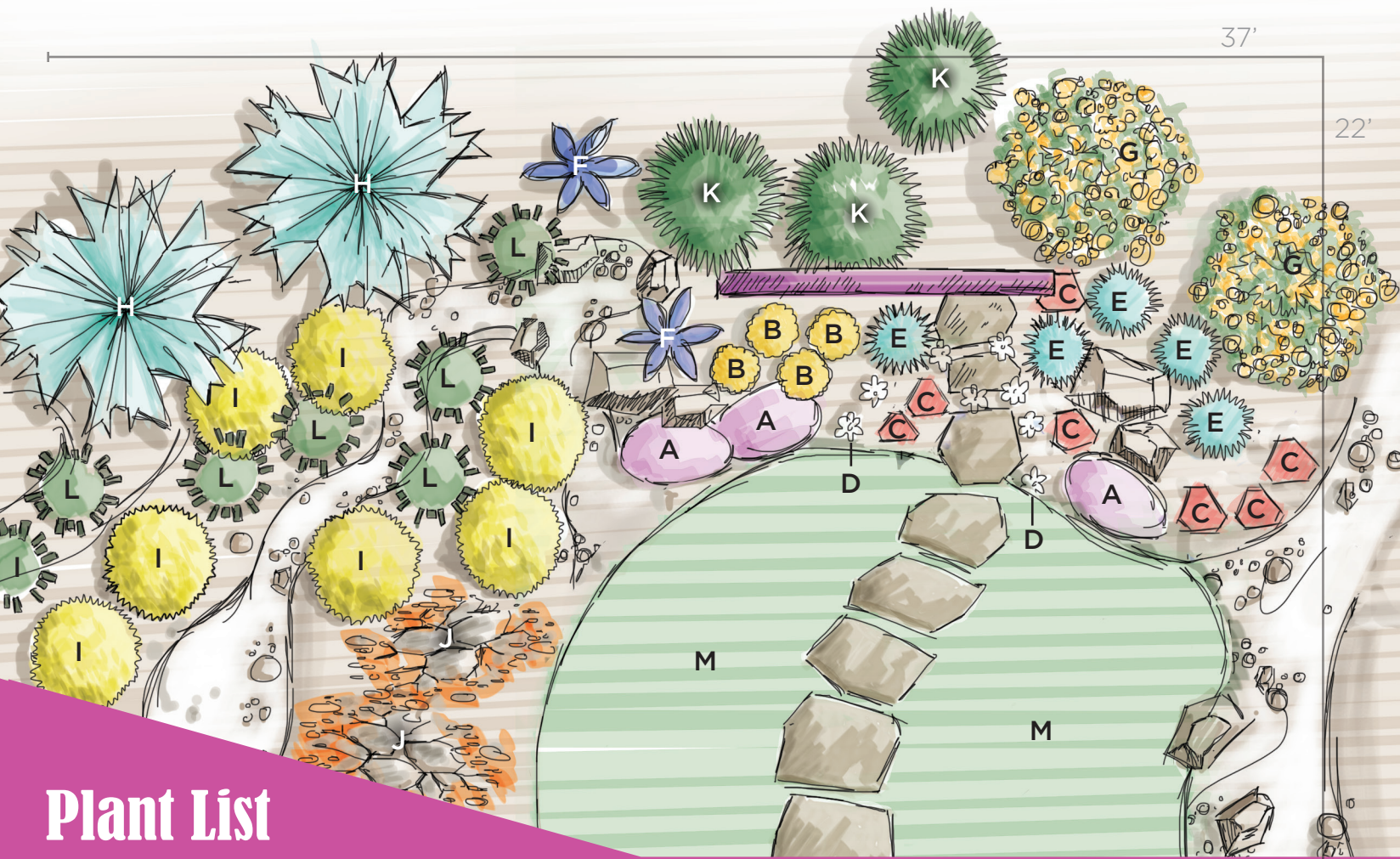


Prairie

A landscape design for sandy, windy and dry front yards



Plant List

- A** COLORADO FOUR O'CLOCK (3)
- B** MOONSHINE YARROW (4)
- C** ROCKY MOUNTAIN PENSTEMON (7)
- D** PUSSEYTOES (8)
- E** BLUE OAT GRASS (5)
- F** BLUE MIST SPIREA (2)
- G** HARRISON'S YELLOW ROSE (2)
- H** WICHITA BLUE JUNIPER (2)
- I** BABY BLUE RABBITBRUSH (7)
- J** PAWNEE BUTTES SANDCHERRY (2)
- K** GIANT SACATON GRASS (3)
- L** BLONDE AMBITION BLUE GRAMA (7)
- M** BLUE GRAMA

It can be challenging to sustain a landscape on a sunny, wind-swept site with sandy soil. That's where prairie plants come to the rescue. This landscape incorporates tough shrubs, flowers and groundcovers that thrive in well-drained soil. Plus, the blue grama lawn uses only half as much water as a traditional lawn. You can mow it twice per month or leave it to grow naturally for a less manicured look.

Visit our garden at 2855 Mesa Rd. to see this landscape in person or check out csu.org for more information.



Colorado Springs Utilities
It's how we're all connected

Prairie landscape tips:

- Use blue grama grass for a low-water, low-maintenance lawn. Check out our in-depth guide at csu.org to learn how to install and maintain this amazing native grass.
- Direct the water from your down spouts to your higher water-use plants.
- Flagstone steppers create a beautiful and informal path that helps protect the lawn from foot traffic.
- Choosing low-water plants like these will save up to 60 percent on your landscape water.
- Shredded wood mulch is best for windy conditions. Apply four inches to retain soil moisture and prevent weeds.



Colorado Springs Utilities

It's how we're all connected

csu.org



Blue Grama Grass



Blue Mist Spirea



Colorado Four O'Clock



Moonshine Yarrow



Pusseytoes