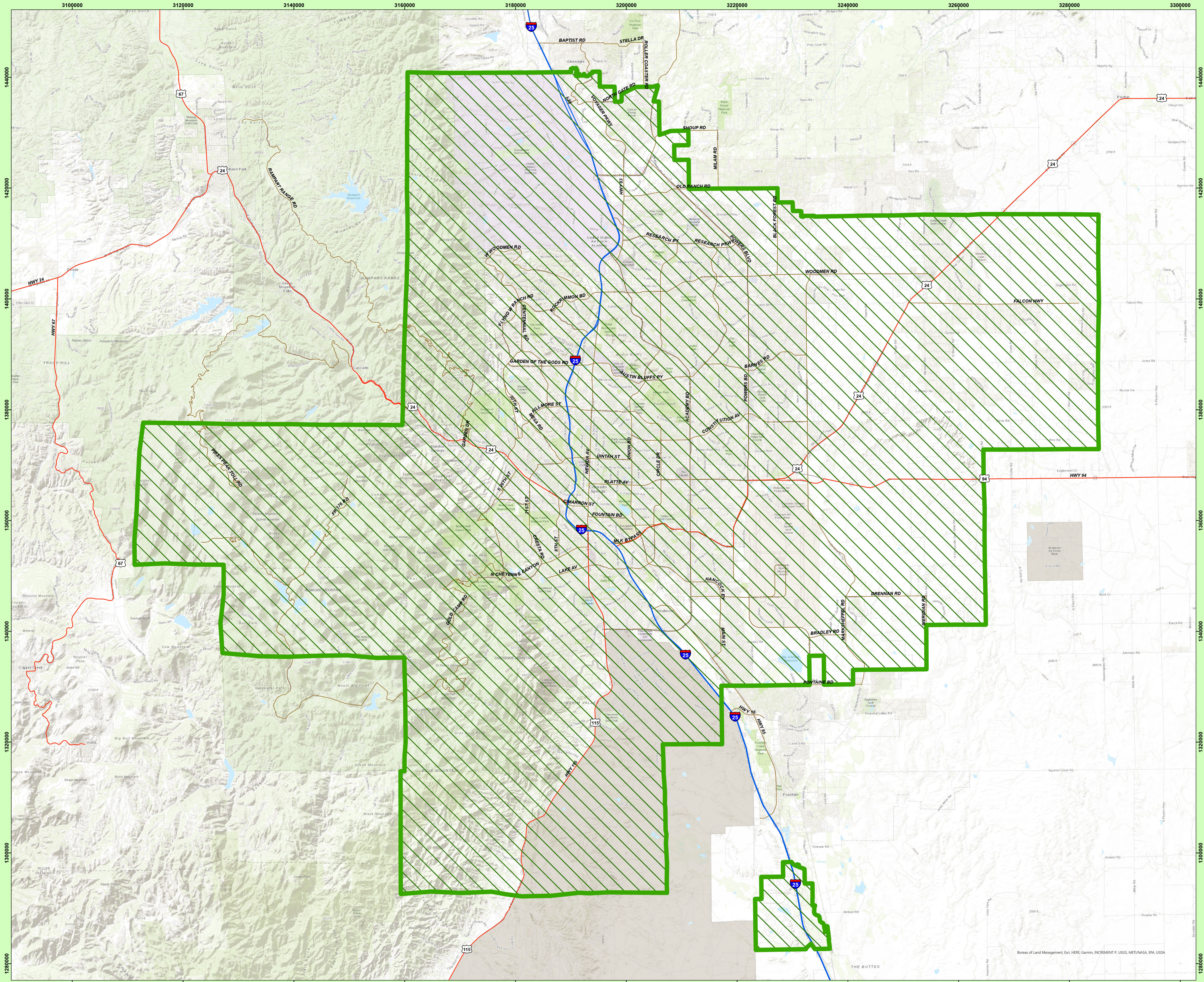
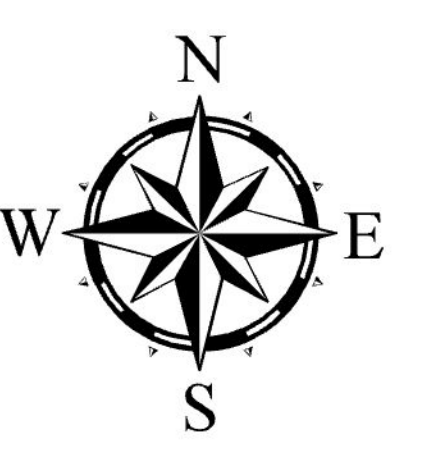


Colorado Springs Utilities - Gas Service Boundary- January 2024



Copyright © 2022 City of Colorado Springs on behalf of the Colorado Springs Utilities. All rights reserved. This work, and/or the data contained herein, may not be reproduced, modified, distributed, republished, used to prepare derivative works, publicly displayed or commercially exploited in any manner without the prior express written consent of the City of Colorado Springs and Colorado Springs Utilities. This work was prepared using the best data available at the time of print creation and is intended for internal use only. Neither the City of Colorado Springs, the Colorado Springs Utilities, nor any of their employees makes any warranty, express or implied, or assumes any legal liability or responsibility for accuracy, completeness, or usefulness of any data contained herein. The City of Colorado Springs, Colorado Springs Utilities and their employees expressly disclaim any responsibility for the data contained herein.



1 0.5 0 1 Miles

1:68,892

Gas Service

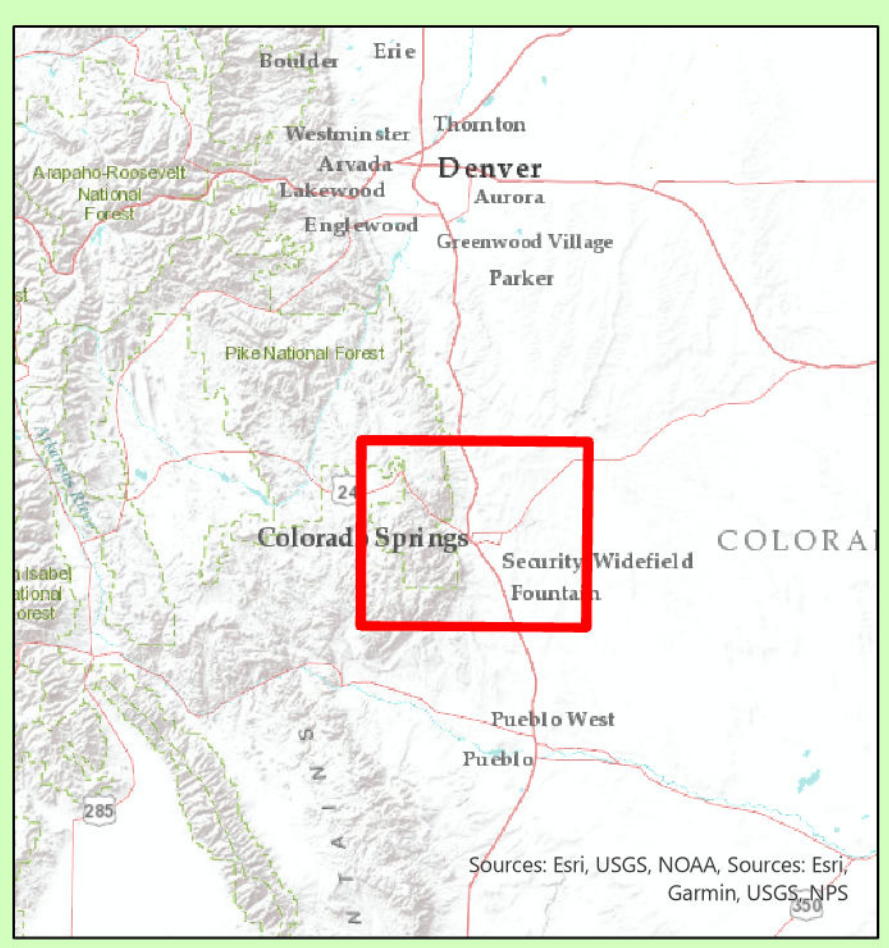
Narrative

This map depicts the utility service boundaries for Colorado Springs Utilities. Water and Wastewater Service Boundaries are coincident and fall along the City of Colorado Springs City Boundary. It also is noted that through contractual agreements with other entities, CSU may provide some services outside these boundaries (contracted areas are not shown on this map).

This map was produced by the Utility Data Management team as part of the Asset Management group of Colorado Springs Utilities.

For information about this map or for additional map requests, please contact us at 719.668.8779 or 719.668.4405.

Author:
Date: 1/24/2024



Sources: Esri, USGS, NOAA, Sources: Esri, Garmin, USGS, NPS